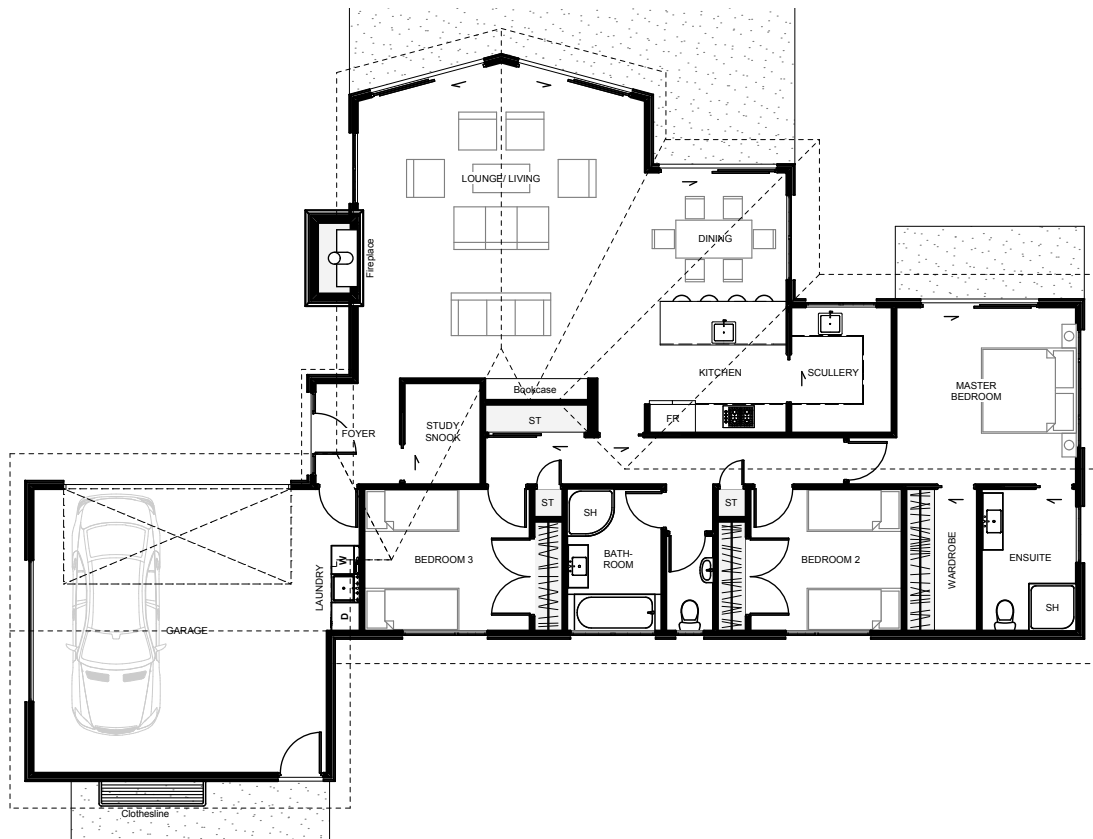




The 'Pukeko' is a timeless style and makes a real statement with its steeply pitched roof and cladding finishes. The main living room sports a high pitched ceiling & makes the space feel large & grand. All north facing walls have large sliding doors which open up the whole home to great outdoor living opportunities. The kitchen includes a scullery so any mess can quickly be shut out of sight with the ingenious wide sliding door. Extras included with this home are the study snook, large storage capacity, an ensuite & walk-in wardrobe.



Floor Area: 190m²

2 cars, 3 bedrooms, 2 bathrooms, 22.2m wide, 15.1m deep

Contact

Telephone: (03) 789 8560

Mobile: 027 632 3808

Email: natcon@xtra.co.nz

Visit us: www.naturalconstruction.co.nz

