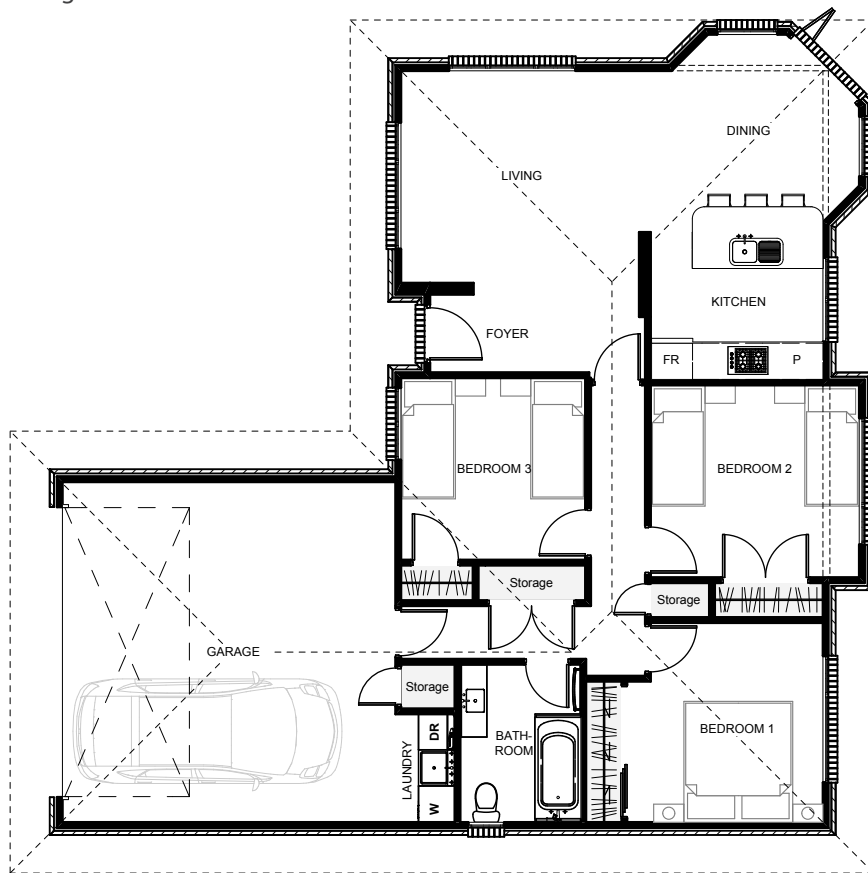




The 'Kotuku' is a traditional brick home designed for a cost effective build with all necessities suited to today's living. Cladding changes can easily be changed from brick to weatherboard or any other cladding type to achieve your desired look. Double garaging with internal access, plenty of storage & great indoor/ outdoor flow make this a smart choice for anyone looking to build with a budget in mind.



Floor Area: 127m²

2 cars | 3 bedrooms | 1 bathroom | 13.4m wide | 13.2m deep

Contact

Telephone: (03) 789 8560

Mobile: 027 632 3808

Email: natcon@xtra.co.nz

Visit us: www.naturalconstruction.co.nz

