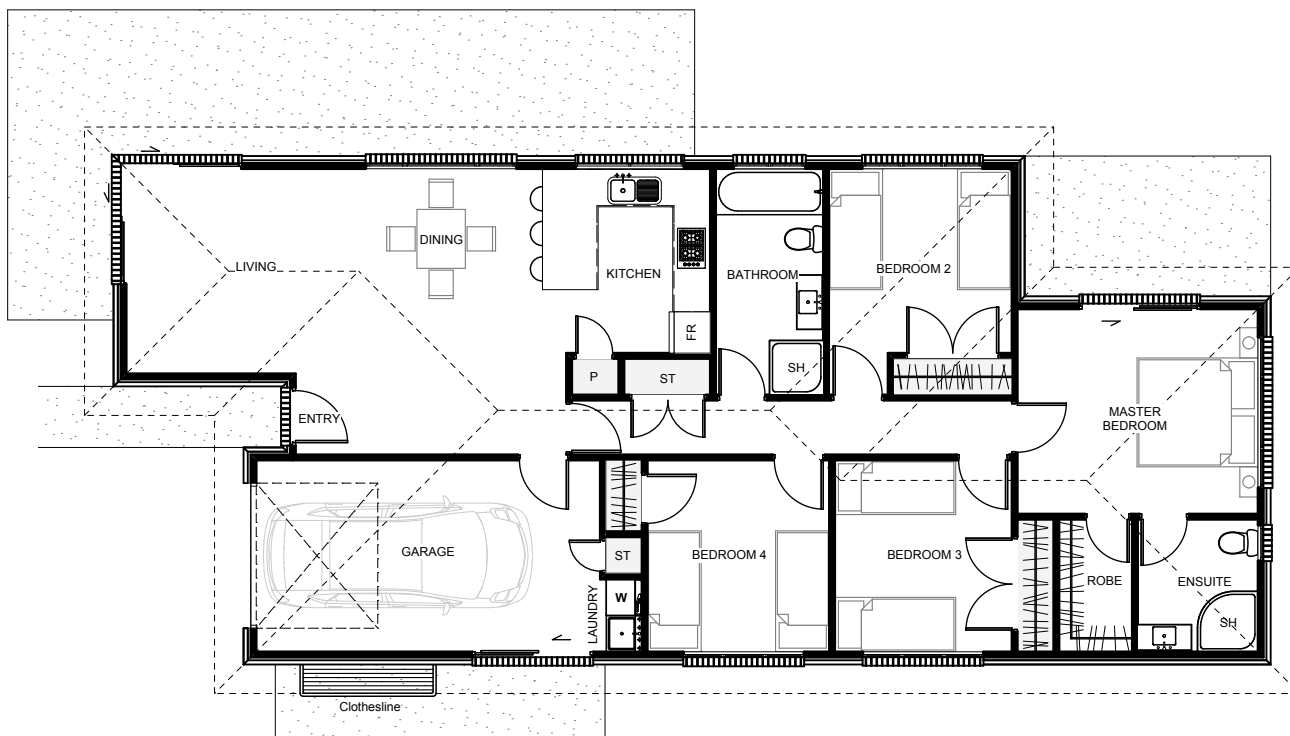




The 'Kea' is an affordable 4 bedroom home with a small footprint suited for multiple sites of all shapes and sizes. This home has an open plan living layout with the advantage of great indoor/ outdoor flow thanks to a modern corner slider. All bedrooms have generous wardrobes including the master bedroom with its very own walk-in wardrobe & ensuite.



Floor Area: 134m<sup>2</sup>

1  
 4  
 2  
 18.9m  
 8.1m

**Contact**

Telephone: (03) 789 8560

Mobile: 027 632 3808

Email: natcon@xtra.co.nz

Visit us: www.naturalconstruction.co.nz

