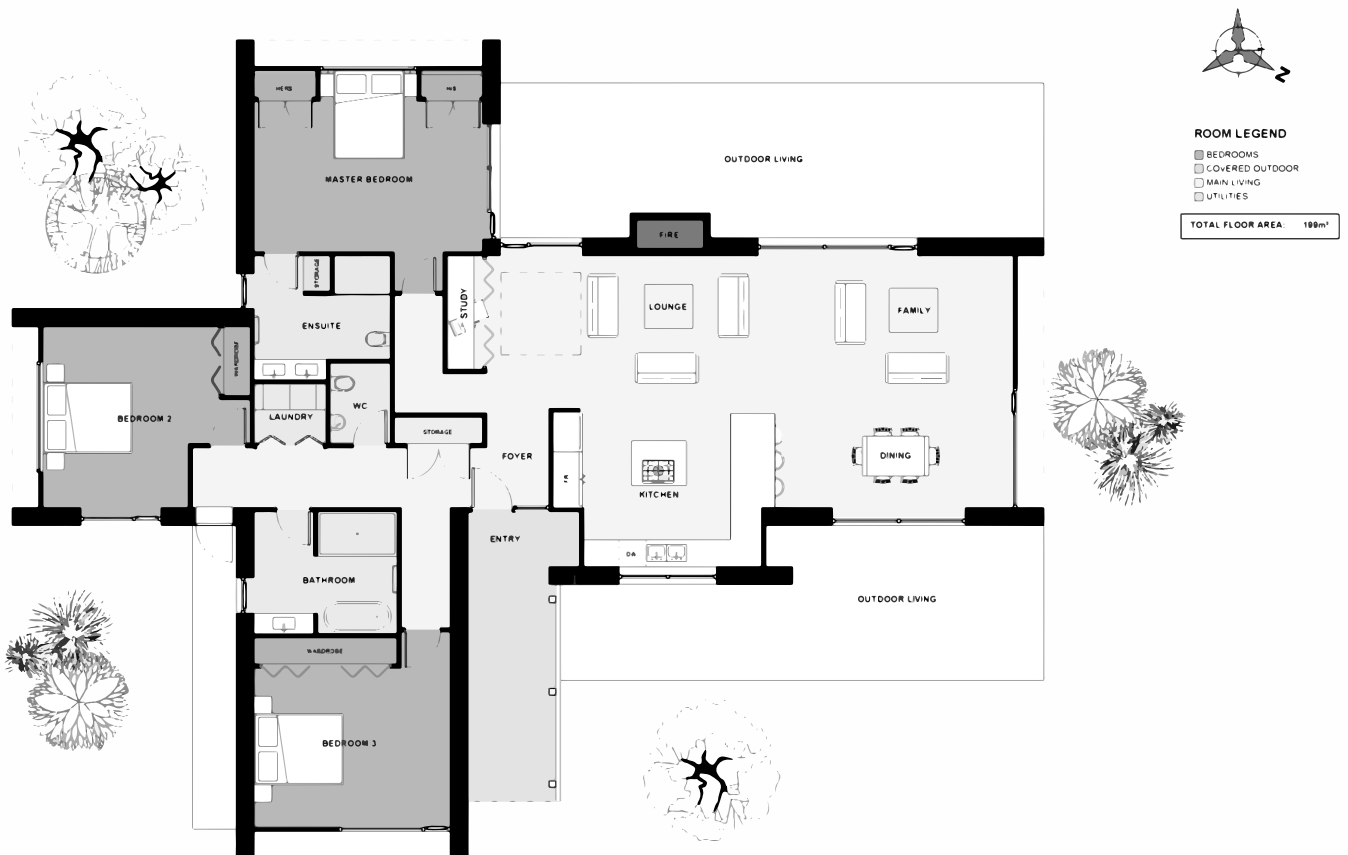




The 'Totara' is modern and edgy with its extruded portal form and standing seam roof/ wall cladding finish. 3 Separate rooms are smartly positioned in a semi symmetrical layout leaving the plumbing grouped together at the core. Open plan living is in the largest wing bringing together the kitchen, fireplace, dining, 2 lounge layouts and study making heating/ air conditioning a single room effort. Sliding doors open this main space out to the courtyard giving alfresco flow.



Floor Area: 199m<sup>2</sup>

0 cars | 3 bedrooms | 2 bathrooms | 23.3m wide | 18.4m deep

**Contact**

Telephone: (03) 789 8560

Mobile: 027 632 3808

Email: natcon@xtra.co.nz

Visit us: www.naturalconstruction.co.nz

